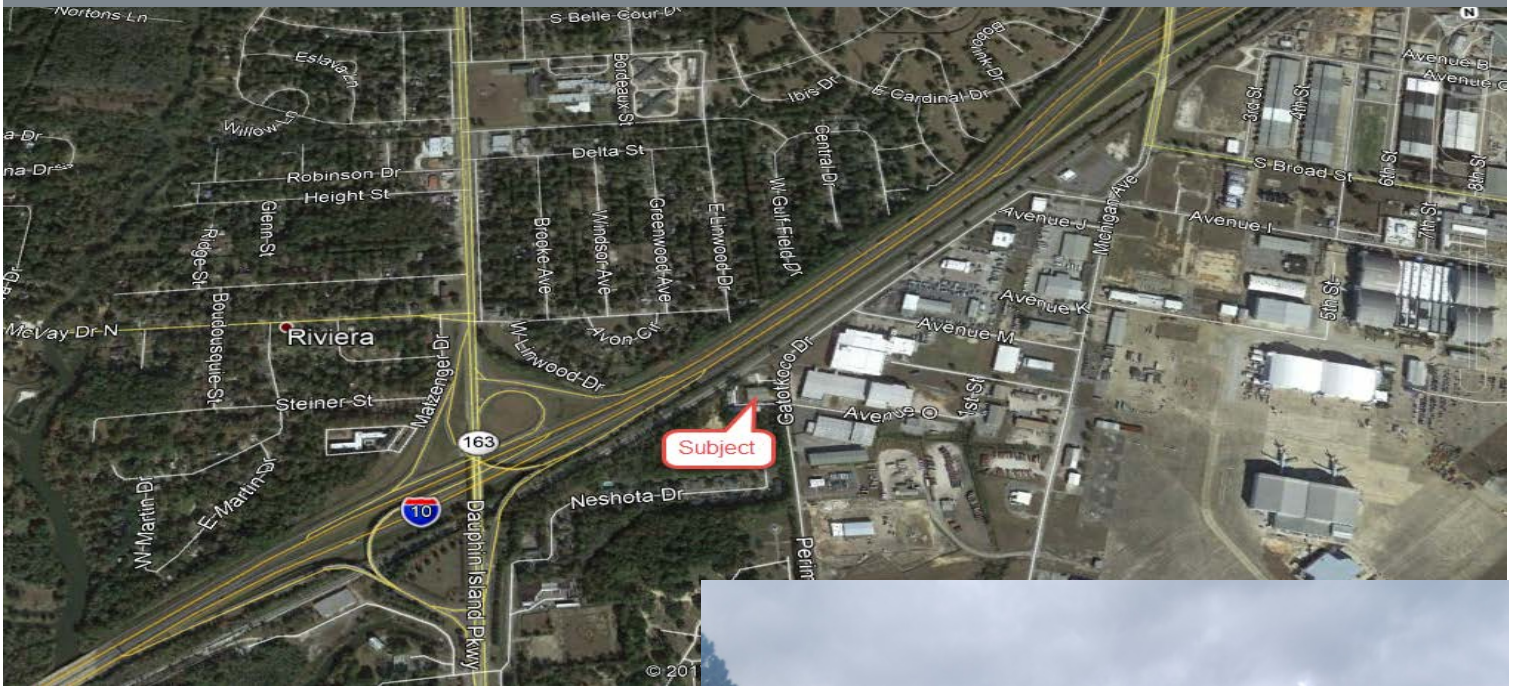


EST. 1956



# HEGEMAN REALTY

*AVAILABLE FOR SALE OR LEASE*



**Address:** 2200 Perimeter Road – Mobile, AL

**Building Size:** 12,500+/-S.F. Office Warehouse

**Office Area:** 2,500+/-S.F.

**Land Area:** 1.27+/- Acres

**Dock Doors:** 3 Covered Docks

**Zoned:** I-1 Light Industrial

**Sprinkled:** Yes

**Clear Height:** 13'-17'

**Lease Rate:** \$4.50S.F Gross

**Sales Price:** \$439,000

**Mitchum Jackson, SIOR**

Phone: (251) 479-8606

mjackson@heggeman.com

225 Dauphin Street- Suite 300

Mobile, AL 36602

THE INFORMATION CONTAINED HEREIN IS DEEMED TO BE RELIABLE BUT NOT WITHOUT REPRESENTATION AS TO ITS ACCURACY AND WITHOUT OBLIGATION TO UPDATE, UNLESS OTHERWISE STATED. PRICE AND TERMS ARE SUBJECT TO PRIOR SALE, LEASE, WITHDRAWAL OR CHANGE WITHOUT NOTICE.

