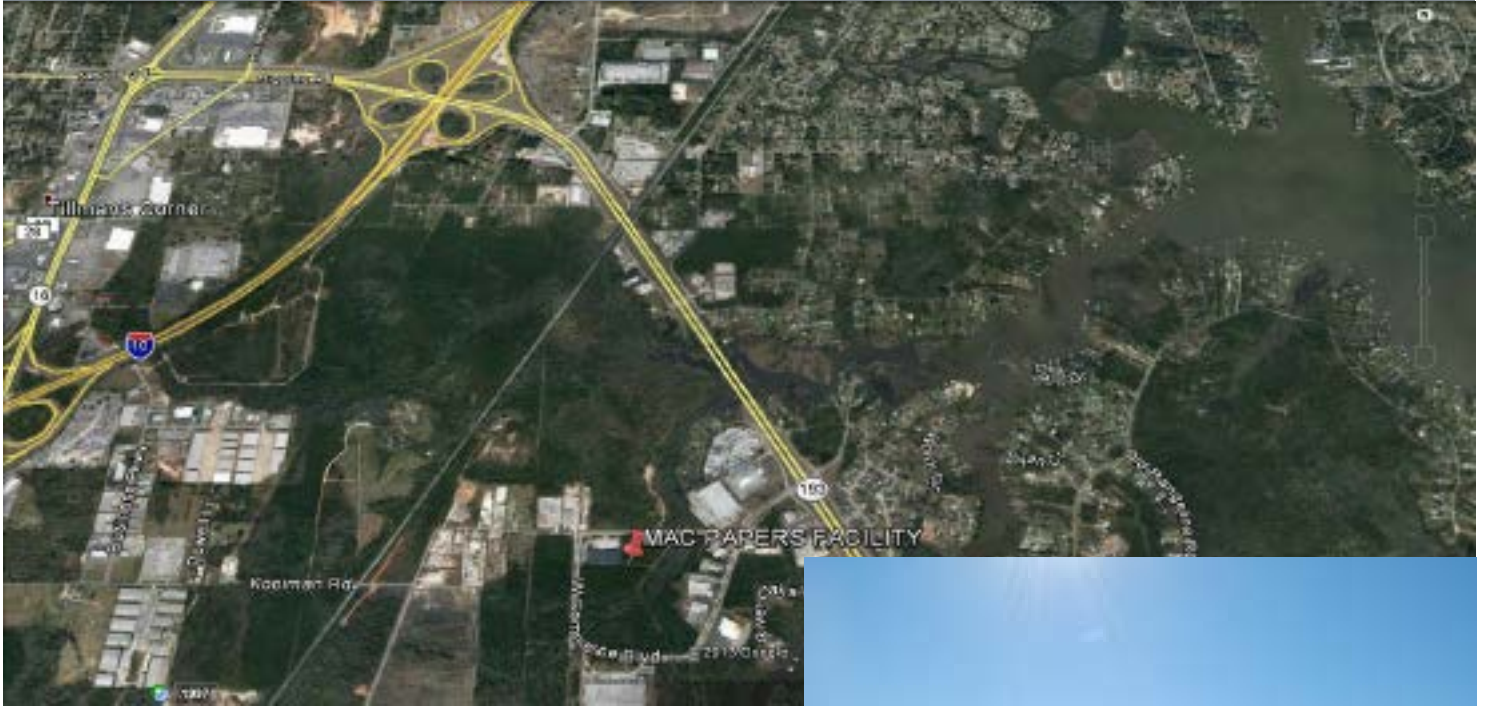


EST. 1956



HEGEMAN REALTY

Available Warehouse Space



Address:
5525 Commerce Blvd West

Location: Mobile Commerce Park
Sq .Ft: 15,000+/-S.F. - 30,000+/-S.F.

Office Area: Will Build Out

Dock Doors: Available

Eave Height: 22'

Sprinkled: Yes

Construction: Tilt – Up Concrete

Lease Rate: \$4.50 PSF Gross

Comments: This is a class A facility that is well located to I-10

For Information Contact:

Mitchum Jackson, SIOR

Phone: (251) 479-8606

mjackson@heggeman.com

225 Dauphin Street- Suite 300

Mobile, AL 36602

THE INFORMATION CONTAINED HEREIN IS DEEMED TO BE RELIABLE BUT NOT WITHOUT REPRESENTATION AS TO ITS ACCURACY AND WITHOUT OBLIGATION TO UPDATE, UNLESS OTHERWISE STATED. PRICE AND TERMS ARE SUBJECT TO PRIOR SALE, LEASE, WITHDRAWAL OR CHANGE WITHOUT NOTICE.

